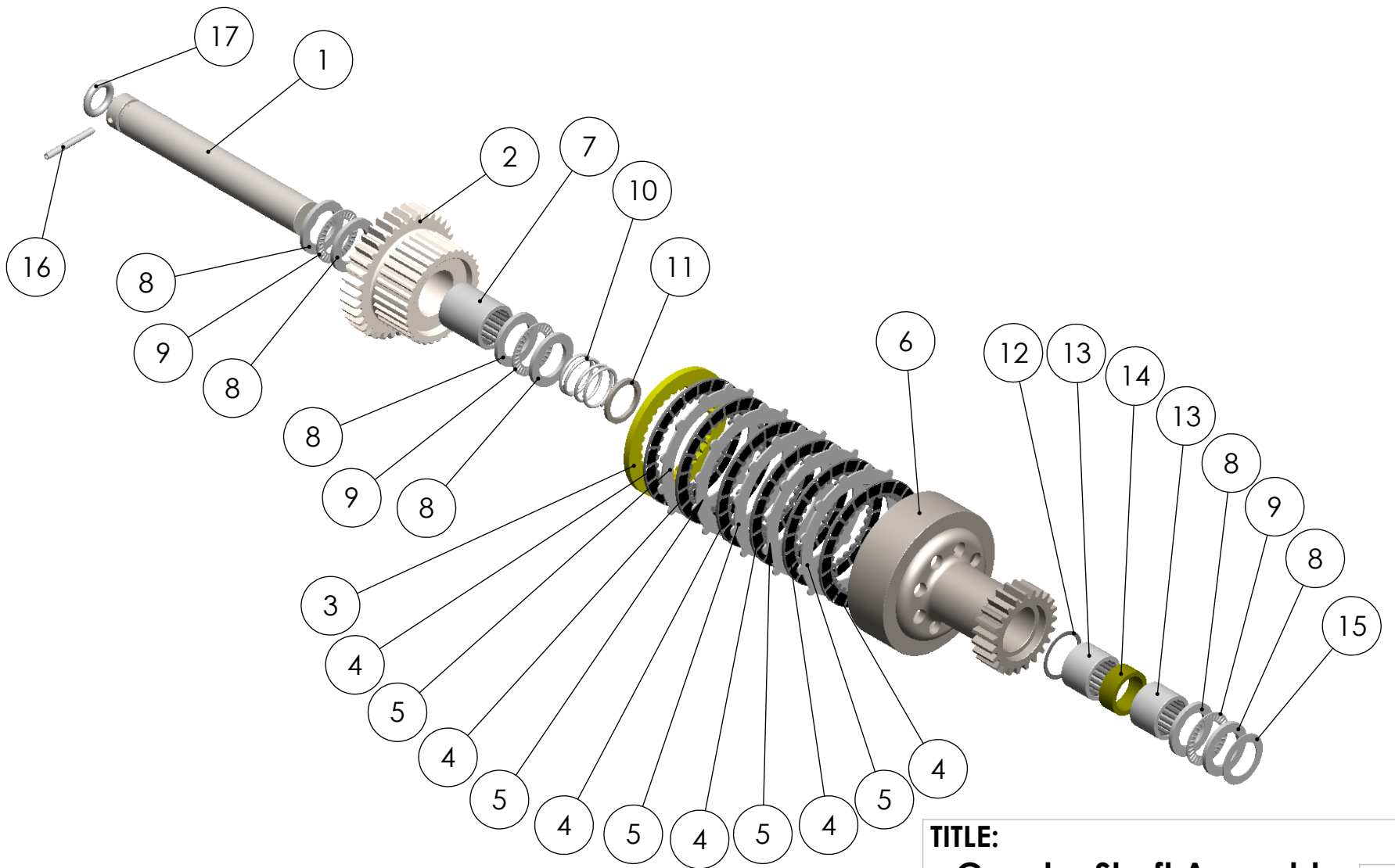


B

B



A

A

TITLE:		
Counter Shaft Assembly		REV
PART#	Explode	

PROPRIETARY AND CONFIDENTIAL THE INFORMATION CONTAINED IN THIS DRAWING IS THE SOLE PROPERTY OF JERICO PERFORMANCE PRODUCTS. ANY REPRODUCTION IN PART OR AS A WHOLE WITHOUT THE WRITTEN PERMISSION OF JERICO PERFORMANCE PRODUCTS IS PROHIBITED. DO NOT SCALE DRAWING	UNLESS OTHERWISE SPECIFIED: DIMENSIONS ARE IN INCHES TOLERANCES: ANGULAR: MACH ± .25 BEND ±.25 ONE PLACE DECIMAL ±0.1 TWO PLACE DECIMAL ±0.01 THREE PLACE DECIMAL ±0.005	DRAWN	SHEET 1 OF 2
		NAME	T. Herr
		DATE	11-7-21
		SCALE:	1:12
		SIZE	A
		(704) 782-4343 443 Pitts School Rd NW, Concord, NC 28027	



2

1

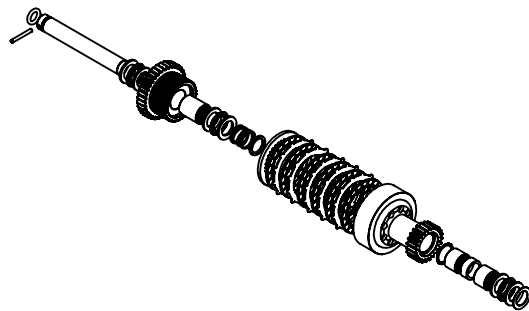
ITEM NO.	PART NUMBER	DESCRIPTION	QTY.
1	JER-0014	Cluster Shaft	1
2	JER-0005	Dirt Clutch Hub	1
3	JER-0006	Cluth Hub Aluminum Spacer	1
4	JER-0007	Friction Clutch Disc - Inner	6
5	JER-0008	Steel Clutch Disc - Outer	5
6	JER-0004	Clutch Drum	1
7	JER-0076	Needle Roller Bearing	1
8	JER-0009	Thrust Washer	6
9	JER-0010	Thrust Bearing	3
10	JER-0077	Clutch Spring	1
11	JER-0078	Clutch Spring	1
12	JER-0079	Internal Spirallock	1
13	JER-0011	Clutch Gear Bearing	2
14	JER-0012	Bearing Spacer .5	1
15	JER-0013	.030 Spacer	1
16	JER-0027	Roll Pin	1
17	JER-0015	O-Ring 116	1

B

B

A

A



TITLE:		
Counter Shaft Assembly		REV
PART#	BOM	

PROPRIETARY AND CONFIDENTIAL

THE INFORMATION CONTAINED IN THIS DRAWING IS THE SOLE PROPERTY OF JERICO PERFORMANCE PRODUCTS. ANY REPRODUCTION IN PART OR AS A WHOLE WITHOUT THE WRITTEN PERMISSION OF JERICO PERFORMANCE PRODUCTS IS PROHIBITED.

DO NOT SCALE DRAWING

UNLESS OTHERWISE SPECIFIED:
 DIMENSIONS ARE IN INCHES
 TOLERANCES:
 ANGULAR: MACH ± .25
 BEND ±.25
 ONE PLACE DECIMAL ±0.1
 TWO PLACE DECIMAL ±0.01
 THREE PLACE DECIMAL ±0.005

	DRAWN	SHEET 2 OF 2
NAME	T. Herr	SCALE: 1:12
DATE	11-7-21	(704) 782-4343
SIZE	A	443 Pitts School Rd NW, Concord, NC 28027

